



BENEFITS OF THE SÜDTIROL GUEST PASS PASSEIERTAL PREMIUM

The “Südtirol Alto Adige Guest Pass” is offered to guests as a special inclusive service by the host. The Guest Pass promotes sustainable mobility and the use of public transport.

The Südtirol Guest Pass



- will be **sent** by e-mail **at check-in or pre-check-in**
- is **bound to the name and period of stay**
- is valid from 00:00 on the day of arrival until 23:59 on the day of departure



- must be **validated** at the start of **each ride**
- is issued exclusively to all overnight guests aged 6 and older
- is not intended for sale

Included Services

The Südtirol Guest Pass entitles you to use local public transport operated by südtirolmobil.



Regional und Regional express trains (R, RV & RE) within South Tyrol and to Trento

- **Brenner railway:** Brenner - Bolzano – Trento
- **Bozen/Bolzano – Meran/Merano**
- **Vinschgau/Venosta valley railway:** Meran/Merano – Mals/Malles
Attention: Partial closures from 16 February 2025
Further information: suedtirolmobil.info/en/news/details/vinschgau-venosta-valley-railway-closure-2025
- **Puster/Pusteria valley railway:** Brixen/Bressanone – Bruneck/Brunico – Innichen-Vierschach/S.Candido-Versciaco
Attention: Partial closures from 15 December 2024
New: Transfer to Pustertal/Val Pusteria only with change at Brixen/Bressanone station
Further information: suedtirolmobil.info/en/news/details/new-pustertal-val-pusteria-railway-line



Local buses

- City buses
- Regional buses
- PostAuto Switzerland
 - Line 811: section Mals/Malles – Müstair/Grenze
- VVT Regiobus
 - Line 273: section Mals/Malles – Pfunds/Kajetansbrücke
 - Line 335: Moos/Moso i.P. – Obergurgl (excl. toll)



Cable Cars

- Renon/Ritten cable-car (Bozen/Bolzano – Oberbozen/Soprabolzano)
- Ritten/Renon narrow gauge railway (Oberbozen/Soprabolzano – Klobenstein/Collalbo)
- Bozen/Bolzano – Kohlern/Colle cable-car
- Mendel/Mendola funicular (St. Anton/S. Antonio – Mendel/Mendola pass)
- Burgstall/Postal – Vöran/Verano cable-car
- Vilpian/Vilpiano-Mölten/Meltina cable-car
- Mühlbach/Rio Pusteria – Meransen/Maransa cable-car (until 24 March 2025)

Exclusive benefits with the South Tyrol Guest Pass Passeiertal Premium – Discover more for your stay in Passeiertal valley:

- Daily ascent and descent (excluding special rides, e.g., evening rides) with the “[Grünboden-Express](#)” cable car in Pfelders (07.12.2024-27.04.2025 & 07.06.-28.09.2025).
- Daily entry to the [outdoor pool at the Sportarena in St. Leonhard](#).
- Daily use of the [bowling alley for 1 hour at the Sportarena in St. Leonhard](#) between 2:00 PM and 6:00 PM from October 2024 to the end of April 2025. Reservation required: T +39 0473 656 226
- Daily entry to the [outdoor pool at the sports center in St. Martin](#).
- Daily use of a [tennis court for 1 hour at the sports center in St. Martin](#).
· Reservation required: M +39 320 65 04 292
- Use of the [sauna for 3 hours at the week - sports center in St. Martin](#).
· Reservation required: M +39 320 65 04 292
- [Introduction to golf at the Passeier.Meran golf course](#) from April 1 to June 30, 2025.
· Reservation required: T +39 0473 641 488
- [Hiking buses](#) (from mid-June to mid-October in the Passeier Valley). Reservation required.
- [Ski buses](#) Jaufen and Hinterpasseier (during Christmas and school holidays).
- One visit to each [museum in the valley](#) (Passiria Museum, Jaufenburg Castle, Bunker Museum).
- Free participation in events [organized by the Passeier Valley Tourism Association](#):
 - guided snowshoe hikes,
 - guided ski tours,
 - cross-country skiing course
 - guided via ferrata tours,
 - vineyard tours,
 - hikes in Riffian,
 - farm hikes,
 - wild but healthy (herbal hikes)
 - wild cuisine (herbal cookery course)
 - sunrise tours
 - summit tours & nature adventure hiking Texelgruppe Nature Park

Reservation required: www.passeiertal.it/events (the hikes and events will be in German or Italian) . Note: **Your personal Guest Card number is required for reservations!**

Excluded services

Special services



- Nightliner
- Long distance trains (e.g. Railjet, Frecciarossa, Italo, Eurocity, Intercity)
- Alpin lines: Seiser Alm/Alpe di Siusi Line 10, 11, 12 | Line 439, 442, 444 in Summer

Dog/pet transport



A separate ticket is required for travelling with pets. **Muzzles are compulsory!**
No ticket is required for guide dogs and small animals that are held in the arms.

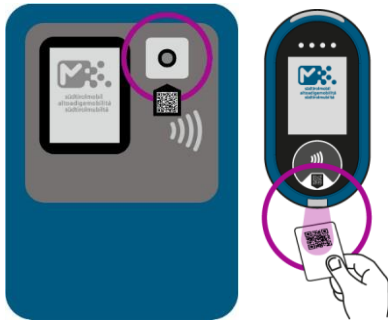
Further information: suedtirolmobil.info/en/tickets/fare-system-and-ticket-validation/travelling-with-a-pet



Bicycle transport

A day bicycle ticket is required to take bicycles with you. Bikes can only be taken on regional trains and buses with bike racks for a limited number of bikes. *Further information:* suedtirolmobil.info/en/tickets/fare-system-and-ticket-validation/bring-your-bike

Validation

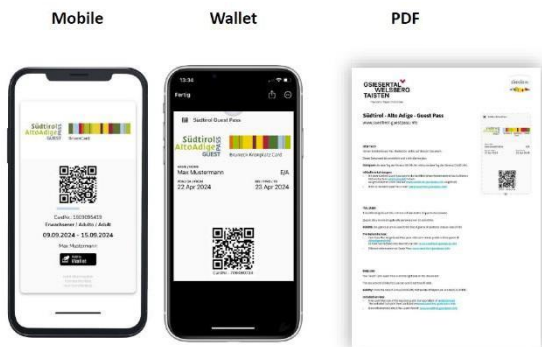


The Guest Pass **must be validated at the start of each journey**. It is validated by scanning the QR code at the blue validation machines. An 'OK' on the display and an acoustic signal confirm successful validation. **Please note that the Guest Pass must not be held too close to the validating machine.**

If travelling by **train**, the Guest Pass must be **validated at the station before boarding**. For train journeys involving a change of train, the Guest Pass must only be validated at the start of the journey.

The Guest Pass is valid at sight on 273 Mals-Pfunds/Kajetansbrücke, 335 Moos i.P.-Obergrugl and 811 Mals-Müstair/Grenze.

Südtirol Guest Pass formats



The digital Südtirol Guest Pass is automatically sent to the guest by e-mail at check-in or pre-check-in, with their name and period of stay.

The following formats are valid:

- Mobile website
- Wallet
- PDF (digital or printout)

Further information about the Südtirol Guest Pass

- Südtirol Guest Pass portal guestpass.suedtirol.info/en
- Timetable information on suedtirolmobil.info and in the südtirolmobil app
- Conditions of carriage suedtirolmobil.info/en/tickets/conditions-of-carriage

